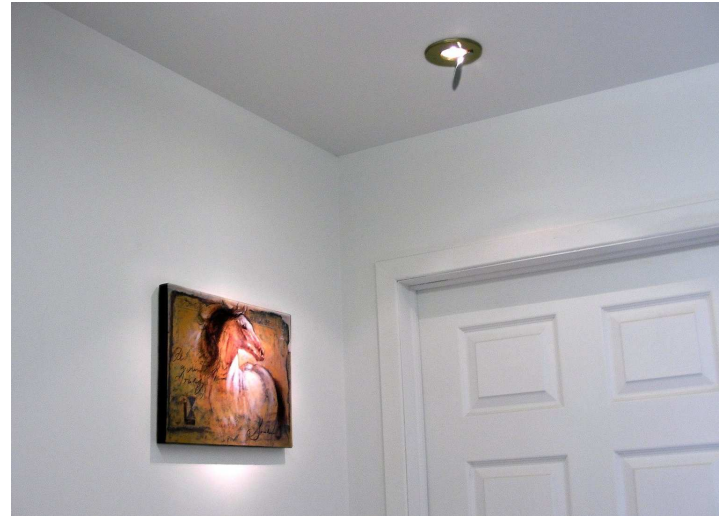


## ***New Product Bulletin – Downlight to Wall Wash Adapter\****

Convert almost any small downlight into a wall wash with our Wall Washer Adapter.

With most trims being made of steel, this adapter mounts instantly with the rare-earth magnet that is bonded onto the arm. The oval area of the adapter is then simply angled from the lamp face, allowing the deflected light to project onto the wall at the desired height.



Inducing a curve also allows the projected beam width to change; a slight concavity narrows the beam, while a slight convexity spreads the beam.

Oval deflector size measures 2-5/8" x 1-3/8".

Another Innovation in Illumination™ from Tripair®.

Contact our sales department at 1-800-361-0983 or [sales@TripairInc.com](mailto:sales@TripairInc.com).

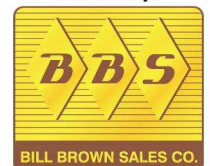
Used with MR16 and smaller lamp sizes, the specular surface deflects nearly all the light. With larger lamp sizes, the light that is in the path of the adapter becomes deflected, leaving the remaining area as a downlight.



Wall Wash  
Adapter,  
item # 1377

\*Patent pending

Downlight Line  
Represented  
in USA by:



800-621-1348